



### Main features

- Ranges: from 0...10 bar to 0...1000 bar (0...150psi to 0...15000psi)
- Accuracy:  $\pm 0.15\%$  FSO typical
- Protection rating: IP65/IP67
- Wetted parts 17-4PH
- Temperature range  $-40...+120^{\circ}\text{C}$

Series TPS transducers are based on the extensimetric measurement principle with strain gauges on metal base. An innovative mechanical structure makes the transducer completely insensitive to tightening during installation. This transducer is suitable for all those applications where in addition to ruggedness and reliability high accuracy is required.

### TECHNICAL DATA

Accuracy (1)	$\pm 0.15\%$ FSO typical; $\pm 0.2\%$ FSO max $>200\text{bar}/3000\text{psi}$ $\pm 0.25\%$ FSO typical; $\pm 0.5\%$ FSO max $\leq 200\text{bar}/3000\text{psi}$
Resolution	Infinite
Overpressure (without degrading performance) (2)	See table
Pressure containment (Burst test) (3)	See table
Wetted parts	Fluid compatible with INOX 17-4PH Stainless Steel
Body materials	INOX AISI 304 Stainless Steel and Nylon 66GF35V0
Power supply	10 (max 15) Vdc/ac RMS
Common mode voltage	Typical 5V @ 10V supply
Output impedance	350 $\Omega$ ( $\pm 1$ )
Load impedance	$> 1000 \text{ K}\Omega$
Insulation resistance	$> 1000 \text{ M}\Omega$ @ 50Volt
Zero offset and span setting	$\pm 0.5\%$ FSO
Output voltage (sensitivity)	10...40bar / 150...500psi 1,5mV/V 50...60bar / 750...1000psi 2mV/V 100...1000bar / 1500...15000psi 3mV/V
Long term stability	$< 0.1\%$ FSO per year
Operating temperature range (process) (5)	$-40...+120^{\circ}\text{C}$ ( $-40...+248^{\circ}\text{F}$ )
Compensated temperature range (4)	$-20...+85^{\circ}\text{C}$ ( $-4...+185^{\circ}\text{F}$ )
Storage temperature range	$-40...+125^{\circ}\text{C}$ ( $-40...+257^{\circ}\text{F}$ )
Temperature effects over compensated range (zero-span)	$\pm 0.01\%$ FSO/ $^{\circ}\text{C}$ typical ( $\pm 0.02\%$ FSO/ $^{\circ}\text{C}$ max.)
Mounting position effects	Negligible
Humidity	Up to 100% RH non condensing
Weight	130 gr. nominal
Mechanical shock	100 g / 11 msec. according to IEC 60068-2-27
Vibrations	20 g max @ 10-2000Hz according to IEC 60068-2-6
Ingress protection	IP65/IP66/IP67

FSO = Full Scale Output

1 Includes combined effects of Non-Linearity BFSL (Best Fit Straight Line), Hysteresis and Repeatability

2 tested for more than 1000 strokes with single duration  $< 2\text{msec}$ .

3 tested for more than 100 strokes with single duration  $< 2\text{msec}$ .

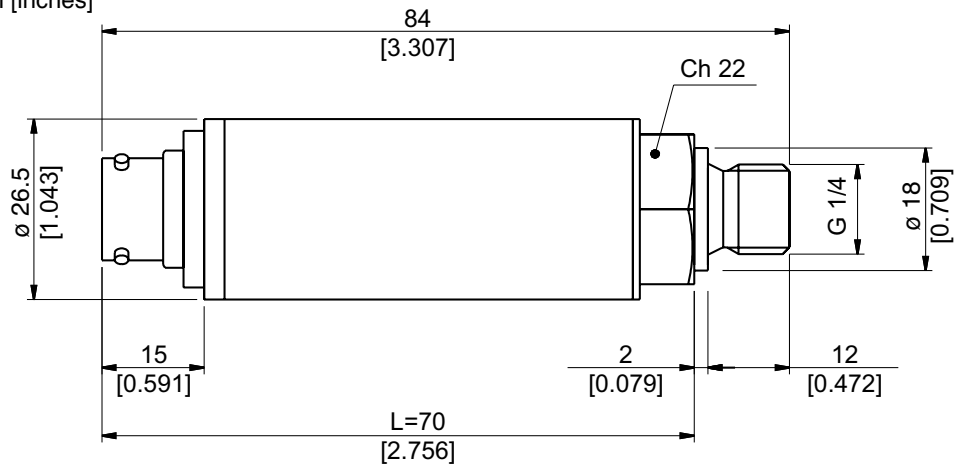
4 temperature outside compensated range may cause zero signal drift

5 ambient and/or electronics part temperature must not exceed  $105^{\circ}\text{C}$

MEASUR. RANGE (Bar)	10	16	20	25	30	35	40	50	60	100	160	200	250	350	400	500	600	700	1000
Overpressure	20	32	40	50	60	70	80	100	120	200	320	400	500	700	800	1000	1200	1400	2000
Burst test	40	64	80	100	120	140	160	200	240	400	640	800	1000	1400	1600	2000	2400	2500	2500

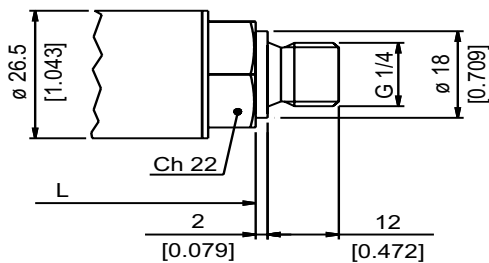
# INSTALLATION DRAWINGS

Dimensions: mm [inches]

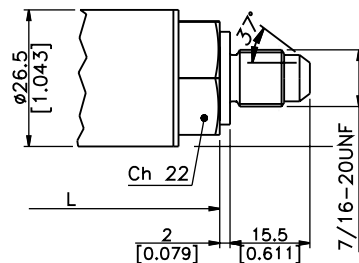


## PRESSURE CONNECTION

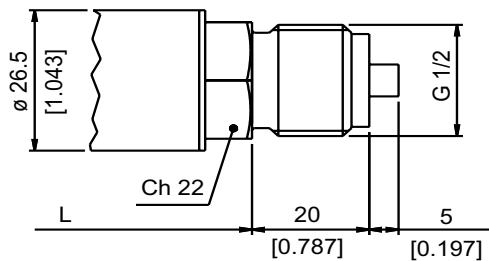
(1) G 1/4 MALE (DIN 3852-A)



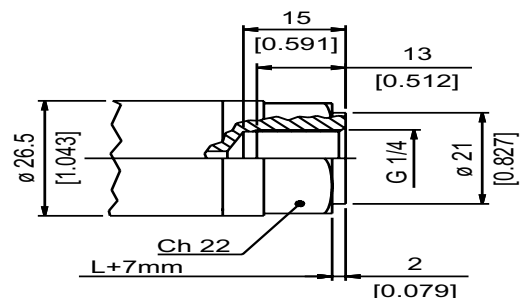
(2) SAE 04 AS4395 - E



(3) G 1/2 A (DIN 16288)

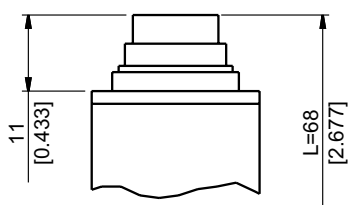


(4) G 1/4 FEMALE

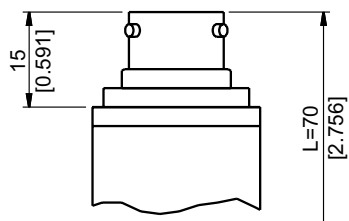


## ELECTRICAL CONNECTION

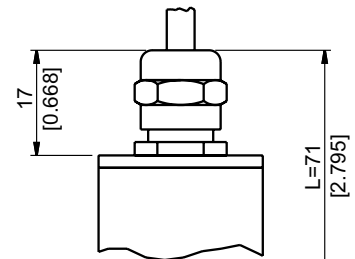
P - 7 pole connector



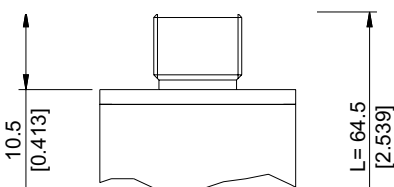
V - 6 pole connector



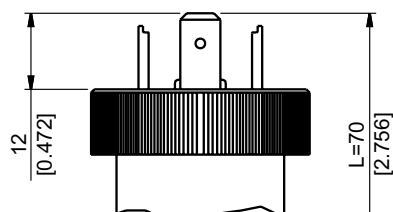
F - 6 pole cable



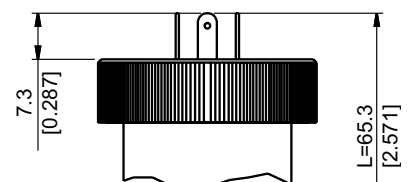
Z - 4 pole connector  
M12 x 1



E - 4 pole connector  
solenoid

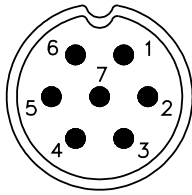


M - 4 pole connector  
microsolenoid



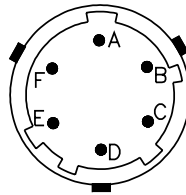
## ELECTRICAL CONNECTION - Connectors

### P - 7-pole connector



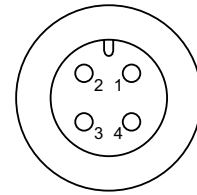
Male connector 09-127-09-07  
Protection IP67

### V - 6-pole connector



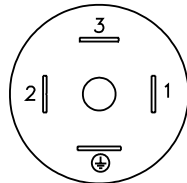
Male connector VPT02A10-6PT2  
Protection IP66

### Z - 4 pole M12 x 1 male connector



Male connector 4 pole series 713  
Protection IP67

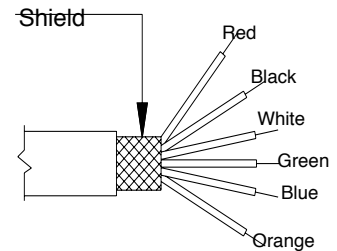
### E - 4 pole solenoid connector M - 4 pole microsolenoid connector



Solenoid DIN 43650A - ISO4400  
Microsolenoid DIN 43650C - ISO4400

Protection IP65  
Protection IP65

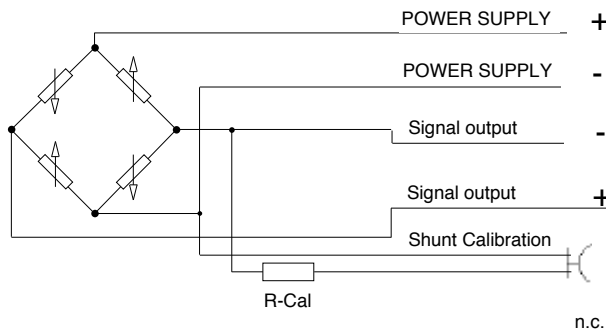
### F - 6 pole cable



F - Shielded cable 6 x 0.25 - 1m.

## ELECTRICAL CONNECTION - connection diagrams

### mV/V output



Code V	Code P	Code F	Code E/M	Code Z
C	1	White	3	1
D	2	Green		2
B	4	Black or Yellow	2	4
A	3	Red	1	3
E - F	5 - 6	Blue/ Orange or Violet	Not available	Not available
	7			

Cable shield connected to transducer body

## ACCESSORIES ON REQUEST

### Connectors

#### Connection E

3 pole connector + ground DIN43650A ISO4400  
Prot. IP65

**CON 006**

#### Connection M

3 pole connector + ground DIN43650C ISO4400  
Prot. IP65

**CON 008**

#### Connection Z

4 pole female cable connector M12x1  
Prot. IP67

**CON 293**

#### Connection Z

4 pole female cable connector, 90° M12x1  
Prot. IP67

**CON 050**

#### Connection P

7 pole female cable connector,  
Prot. IP67

**CON 321**

#### Connection P

7 pole female cable connector,  
Prot. IP40

**CON 320**

#### Connection P

7 pole female cable connector 90°,  
Prot. IP40

**CON 322**

#### Connection V

6 pole female cable connector,  
Prot. IP66

**CON 300**

#### O-ring

O-ring seal for G1/4 gas male pressure connector (1)

**RON 300**

## EXTENSION CABLES

6 pole female connector (CON 300) + 2 m (6.5 ft) of cable (6x0.25)  
6 pole female connector (CON 300) + 4 m (13 ft) of cable (6x0.25)  
6 pole female connector (CON 300) + 6 m (20 ft) of cable (6x0.25)  
6 pole female connector (CON 300) + 8 m (25 ft) of cable (6x0.25)  
6 pole female connector (CON 300) + 10 m (33 ft) of cable (6x0.25)  
6 pole female connector (CON 300) + 15 m (50 ft) of cable (6x0.25)  
6 pole female connector (CON 300) + 20 m (66 ft) of cable (6x0.25)  
6 pole female connector (CON 300) + 25 m (82 ft) of cable (6x0.25)  
6 pole female connector (CON 300) + 30 m (100 ft) of cable (6x0.25)  
Other lengths

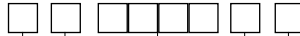
**C02W**  
**C04W**  
**C06W**  
**C08W**  
**C10W**  
**C15W**  
**C20W**  
**C25W**  
**C30W**  
on request

Cable color code	
Pin	Wire
A	Red
B	Black
C	White
D	Green
E	Blue
F	Orange

# ORDERING INFORMATION

Pressure transducer

TPS



PRESSURE CONNECTION	
<b>Standard</b>	
G 1/4 gas male	<b>1</b>
<b>On request</b>	
7/16-20 UNF-2A male (SAE 4 for AS4395-E)	<b>2</b>
G 1/2A (DIN 16288)	<b>3</b>
G 1/4 gas female	<b>4</b>
1/8-27 NPT female	<b>5</b>
1/4-18 NPT female	<b>6</b>
1/4-18 NPT male	<b>7</b>
M14 x 1.5 male	<b>8</b>
1/8-27 NPT male	<b>9</b>
G 1/4 male (DIN 3852-E)	<b>E</b>
M12 x 1.5 male	<b>R</b>
7/16-20 UNF-2A male (SAE 4 for J1926-2) (*)	<b>K</b>
7/16-20 UNF-2A female (SAE 4)	<b>F</b>

(\*) Max. working pressure:  
630 bar (9137 psi)

ELECTRICAL CONNECTION	
4-pole connector solenoid	<b>E *</b>
shielded cable	<b>F</b>
4-pole connector	<b>Z *</b>
4-pole connector microsolenoid	<b>M *</b>
7 pole connector	<b>P</b>
6 pole connector	<b>V</b>

(\*) Calibration signal not available

Mechanical and/or electrical characteristics differing from standard may be arranged on request.

### ACCURACY

<b>T</b>	±0.15% FSO typical >200bar/3000psi ±0.25% FSO typical ≤200bar/3000psi
----------	--

### MEASUREMENT RANGE

bar		psi	
<b>B01D</b>	0..10	<b>P15D</b>	0..150
<b>B16U</b>	0..16	<b>P25D</b>	0..250
<b>B02D</b>	0..20	<b>P03C</b>	0..300
<b>B25U</b>	0..25		
<b>B03D</b>	0..30		
<b>B35U</b>	0..35	<b>P05C</b>	0..500
<b>B04D</b>	0..40		
<b>B05D</b>	0.50	<b>P75D</b>	0..750
<b>B06D</b>	0..60	<b>P01M</b>	0..1000
<b>B01C</b>	0..100	<b>P15C</b>	0..1500
<b>B16D</b>	0..160	<b>P02M</b>	0..2000
<b>B02C</b>	0..200	<b>P25C</b>	0..2500
<b>B25D</b>	0..250	<b>P03M</b>	0..3000
<b>B35D</b>	0..350	<b>P04M</b>	0..4000
<b>B04C</b>	0..400	<b>P05M</b>	0..5000
<b>B05C</b>	0..500	<b>P75C</b>	0..7500
<b>B06C</b>	0..600		
<b>B07C</b>	0..700	<b>P10M</b>	0..10000
<b>B01M</b>	0..1000	<b>P15M</b>	0..15000

### CALIBRATION STANDARDS

Instruments manufactured by Gefran are calibrated against precision pressure calibration equipment which is traceable to International Standards.

Ex.: **TPS - 4 - V - B07C - T**

Pressure transducer TPS with G 1/4 female process connection, 6 pole connector, 0..700 bar measurement range, ± 0.15% FSO accuracy.