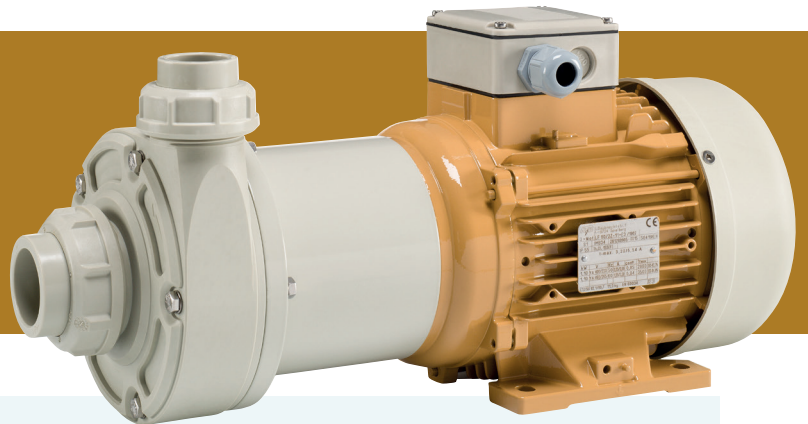


HORIZONTAL PUMPS

Magnetic drive

M110 .. M400 - PP/PVDF



M110-PP

10 - 30 m³/h

167 - 500 l/min

Magnetic drive pump, sealless and therefore leak free and safe for people, environment and equipment.

The M series combines optimized hydraulic efficiency with a robust, compact and reliable construction. This results in maximum installation uptime and a long service life, providing best in class performance, technically and economically. The M series is designed and manufactured for transfer and circulation of chemicals. Easy to build-in and -out, specially for OEM configurations.

Features

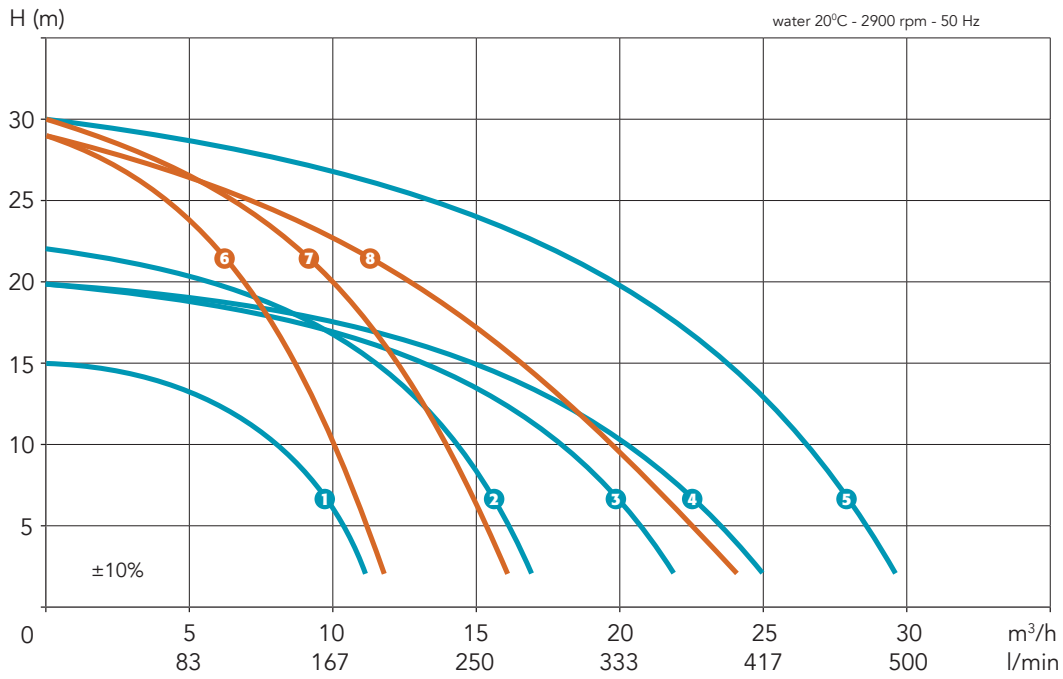
- Magnetic drive
- Sealless, 100% leak free
- Ceramic/PTFE bearings
- Including complete +GF+ union ends
- EPDM elastomers
- Max. temperature PP 80°C, PVDF 100°C
- Stainless steel fasteners and type shields
- Extra strong neodymium magnets
- Single stage operation
- High quality European, purpose designed electric motor:
 - 3 phase, 50/60 Hz, 2900/3500 rpm, IP55, multi voltage
 - with double layer 2C chemical resistant coating
 - suitable for frequency drive control

Options

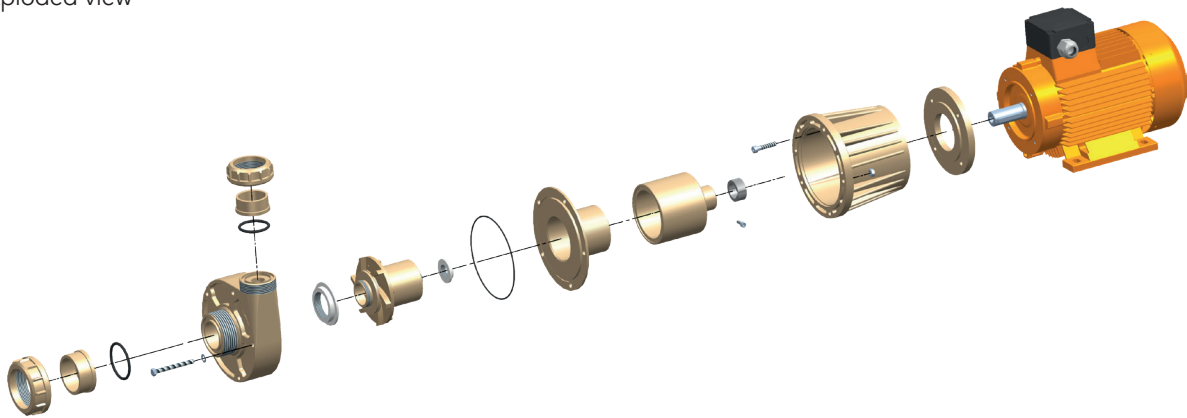
- Hose or flange connections
- Union sockets in PVC or CPVC
- Specific bearings and elastomers
- Dry run protection
- Priming chamber
- Electric motor options:
 - motor mounted frequency drive
 - EMC compatibility
 - PTC thermistor
 - thermal overload incl. switch and lead
 - single phase
 - specific voltages
 - electrical lead (4 m)
 - other RAL colours

Type	Material	Q max (m ³ /h)	H max (m)	Motor		I nom. (A) 400V-50Hz	In (d/DN)	Out (d/DN)	Net weight (kg)	
				kW	HP				PP	PVDF
M110	PP or PVDF	11	16	1,1	1½	2,25	40/32	32/25	15	17
M150		18	22	1,5	2	2,86	50/40	40/32	25	27
M220		24	21	2,2	3	4,13	63/50	50/40	25	27
M300		26	21	3	4	5,75	63/50	50/40	31	33
M400		30	31	4	5½	7,40	63/50	50/40	38	40
M150-H		12	28	1,5	2	2,86	63/50	50/40	25	27
M220-H		16	28	2,2	3	4,13	63/50	50/40	25	27
M300-H		20	30	3	4	5,75	63/50	50/40	29	31

Auswahlbeispiel: M110-PP



Exploded view



Dimensions

Type	"D"	"I"	"N"	In	Out
M110	410	205	156	40/32	32/25
M150	505	236	170	50/40	40/32
M220	523	249	200	63/50	50/40
M300	553	254	195	63/50	50/40
M400	570	279	225	63/50	50/40
M150-H	505	236	170	63/50	50/40
M220-H	523	249	200	63/50	50/40
M300-H	553	254	195	63/50	50/40

