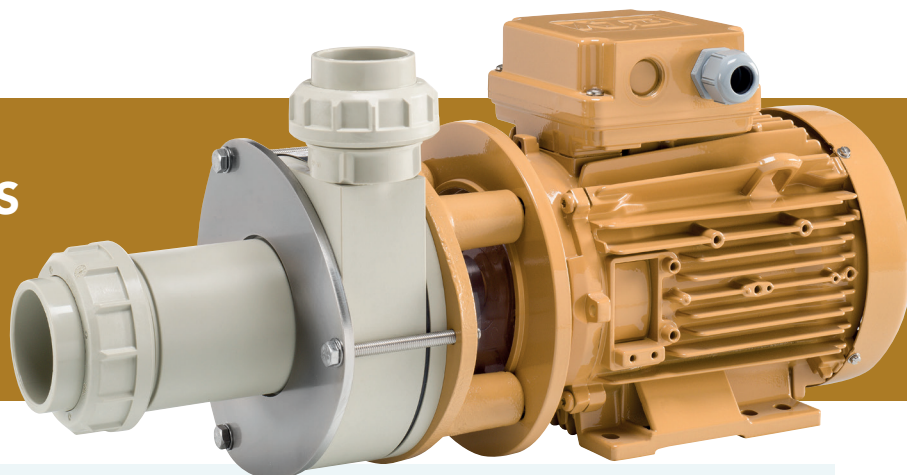


HORIZONTAL PUMPS

Mechanical seal S55 .. S300 - PP



6 - 30 m³/h
100 - 500 l/min

S55-PP

Mechanical seal pump, robustly built from in-house machined parts and equipped with a durable single seal.

The S series combines optimized hydraulic efficiency with a robust, compact and reliable construction. This results in maximum installation uptime and a long service life, providing best in class performance, technically and economically. The S series is designed and manufactured for transfer and circulation of chemicals. Easy to build-in and -out, specially for OEM configurations.

Features

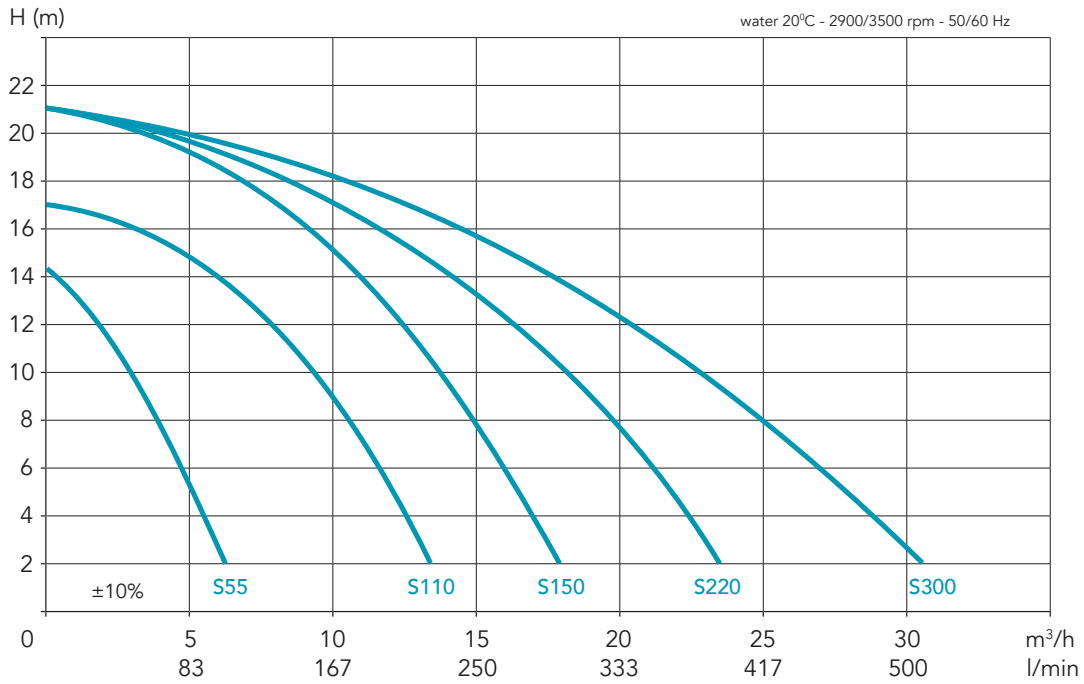
- Single mechanical seal
- Ceramic seal
- Including complete +GF+ union ends
- EPDM elastomers
- Max. temperature 80°C
- Stainless steel fasteners and type shields
- Single stage operation
- High quality European, purpose designed electric motor:
 - 3 phase, 50/60 Hz, 2900/3500 rpm, IP55, multi voltage
 - with double layer 2C chemical resistant coating
 - suitable for frequency drive control

Options

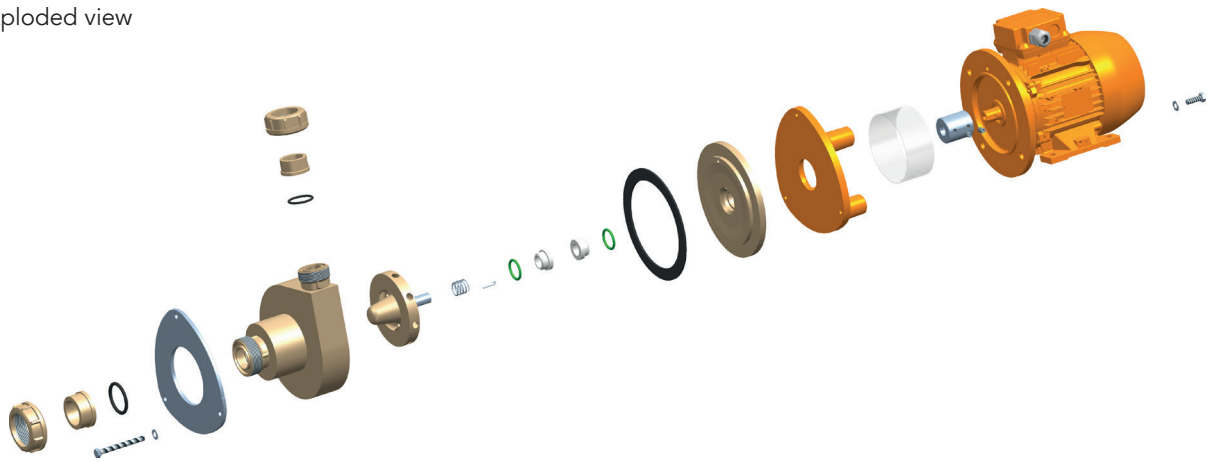
- Hose or flange connections
- Union sockets in PVC or CPVC
- Specific seal and elastomers
- Priming chamber
- Dry run protection
- 100°C version
- Electric motor options:
 - motor mounted frequency drive
 - EMC compatibility
 - PTC thermistor
 - thermal overload incl. switch and lead
 - single phase
 - specific voltages
 - electrical lead (4 m)
 - other RAL colours

Type	Material	Q max (m ³)	H max (m)	Motor kW	HP	I nom. (A) 400V-50Hz	In (d/DN)	Out (d/DN)	Net weight (kg)
S55	PP	6	15	0,55	3/4	1,5	32/25	25/20	13
S110		14	17	1,1	1¼	2,25	40/32	32/25	18
S150		18	21	1,5	2	2,86	50/40	40/32	22
S220		24	21	2,2	3	4,55	63/50	50/40	25
S300		32	20	3	4	5,75	63/50	50/40	29

Selection example: S55-PP



Exploded view



Dimensions

Type	"D"	"I"	"N"	In	Out
S55	395	209	180	32/25	25/20
S110	452	227	180	40/32	32/25
S150	496	256	180	50/40	40/32
S220	523	256	180	63/50	50/40
S300	523	256	180	63/50	50/40

