

### Technical Data

#### RoHS

Panel connector, cable connector and coupler connector

Panel connector



Cable connector



Coupler connector



rectangular housing

screw connection

IP 50 to IP 54 with conexil in the housing, flat-gasket for panel connector and cable connector seal

Contacts 3 to 52 contacts  $\varnothing$  2 mm –  $\varnothing$  3 mm –  $\varnothing$  4 mm non-removable solder contacts

Max. current 15 A  $\varnothing$  2 mm – 35 A  $\varnothing$  3 mm – 50 A  $\varnothing$  4 mm

Contact resistance between pin and socket < 0,0015  $\Omega$   $\varnothing$  2 mm – < 0,0010  $\Omega$   $\varnothing$  3 mm – < 0,0007  $\Omega$   $\varnothing$  4 mm

Breakdown voltage between adjacent contacts > 2500 Volts (RMS)

Breakdown voltage between peripheral contacts and ground > 1500 Volts (RMS), (> 2000 Volts (RMS) 4 contacts  $\varnothing$  4 mm)

Insulation resistance > 5000 M $\Omega$

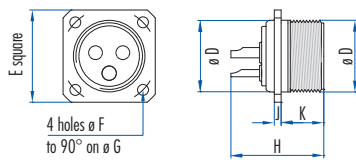
Operating temperature -40 °C to +100 °C (500 hours at +125 °C)

Materials Nickel-plated light alloy, silver-plated brass contact, PBT insert except contacts diameter 4 mm which are gold-plated brass

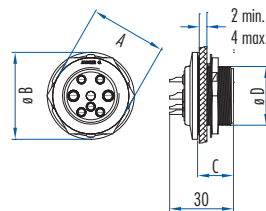
Max. cross-section of soldered conductors 1,34 mm<sup>2</sup>  $\varnothing$  2 mm – 3,18 mm<sup>2</sup>  $\varnothing$  3 mm – 5,26 mm<sup>2</sup>  $\varnothing$  4 mm

### Dimensional Data

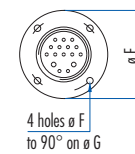
Panel connector



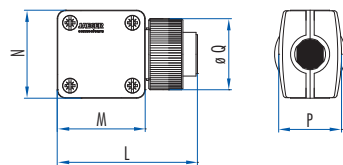
Circular male panel connectors housings 1 and 2



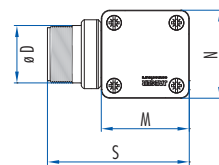
Circular male panel connectors housings 3 to 5



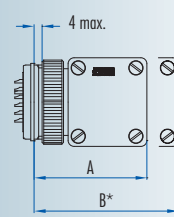
Cable connector



Coupler connector



Cable connector – Panel connector assembly



Housing	Number of Contacts	Circular male panel connector						
		A	$\varnothing$ B	C	$\varnothing$ D	$\varnothing$ E	$\varnothing$ F	$\varnothing$ G
1	3-4-6	29	34	16,5	M21			
2	4-8-12	35	40	16,5	M27			
3	17					57	4,2	48
4	25					63	4,2	54
5	35-52					72	4,2	62

Housing	Number of Contacts	Assembly	Square and circular male panel connector													Female cable connector – Male coupler connector															
			A	B	$\varnothing$ D	E	$\varnothing$ F	$\varnothing$ G	H	J	K	L	M	N	P	$\varnothing$ Q	S	A	B	$\varnothing$ D	E	$\varnothing$ F	$\varnothing$ G	H	J	K	L	M	N	P	$\varnothing$ Q
1	3-4-6	52	64	21	27	3,2	28	25	2	12,7	51,2	32,2	32,2	23	26	51,8	56	66	21	27	3,2	28	28,7	2	16	51,5	32,2	32,2	23	26	52
2	4	56	68	27	32	3,2	34	29	2	12,5	55,2	36,4	36,4	28,4	33	56,5	60	70	27	32	3,2	34	28,6	2,1	16	55	36,4	36,4	28,4	33	56,4
2	8-12	56	68	27	32	3,2	34	21	2	12,5	55,2	36,4	36,4	28,4	33	56,5	60	70	27	32	3,2	34	28,6	2,1	16	55	36,4	36,4	28,4	33	56,4
3	17	64	75	39	43	4,2	48	23	2	12	62,4	42,6	47,6	38,6	44	62	68	83	39	43	4,2	48	29,8	2	18,6	62,5	42,6	47,6	38,6	44	67,5
4	25	68	81	45	47	4,2	54	23,8	2	12	67,6	47,8	53,8	44,8	51	69	73	87	45	47	4,2	54	29,8	2	18,6	67,2	47,8	53,8	44,8	50	72,5
5	35	78	89	52	54	4,2	62	28,8	1,9	12,1	74,5	55	61,5	51,5	58	76	80,5	93	52	54	4,2	62	30,6	2	18,6	74,5	55	61,5	51,5	58	
5	52	78	89	52	54	4,2	62	28	1,9	12,1	74,5	55	61,5	51,5	58	76	80,5	93	52	54	4,2	62	30,6	2	18,6	74,5	55	61,5	51,5	58	

\* B: minimum disconnection distance

### Part Number

Housing	1	1	1	2	2	2	3	4	5	5
Number of Contacts	3	4	6	4	8	12	17	25	35	52
L ∅ 2 mm	1	4	6		6	12	15	23	33	52
L ∅ 3 mm	2				2		2	2	2	
L ∅ 4 mm				4						

#### Male panel connectors – Female cable connectors – Male coupler connectors

Circular male panel connector*	°536 753 006	°536 754 006	°536 756 006		°536 758 006	°536 762 006	°536 117 006	°536 125 006	°536 135 006	°533 706 006
Square male panel connector	°038 351 006	°043 082 006	°038 355 006	°533 763 006	°038 356 006	°038 359 006	°038 322 006	°042 986 006	°043 001 006	°533 703 006
Female cable connector	042 953 006	043 085 006	042 954 006	530 763 006	042 955 006	042 956 006	038 382 006	042 977 006	042 990 006	530 703 006
Male coupler connector	532 203 006	532 204 006	532 206 006	530 768 006	532 208 006	532 212 006	532 217 006	532 225 006	532 235 006	530 707 006
Type 3 cable clamp	630 135 006	630 135 006	630 135 006	630 138 006	630 138 006	630 138 006	630 155 006	630 155 006	630 175 006	630 175 006
Flat-Gasket for panel connector (pack of 10)	536 945 006	536 945 006	536 945 006	536 946 006	536 946 006	536 946 006	536 947 006	536 126 006	536 136 006	536 136 006
Protective cap for panel connector	536 910 006	536 910 006	536 910 006	536 911 006	536 911 006	536 911 006	536 912 006	536 913 006	536 914 006	536 914 006
Protective cap for female cable connector	532 260 006	532 260 006	532 260 006	532 278 006	532 278 006	532 278 006	532 262 006	532 263 006	532 264 006	532 264 006
Protective cap for coupler connector	536 910 606	536 910 606	536 910 606							

#### Female panel connectors – Male cable connectors – Female coupler connectors

Square female panel connector	°536 603 006	°536 604 006	°536 606 006	°533 760 006	°536 608 006	°536 612 006	°536 617 006	°536 625 006	°536 635 006	°533 700 006
Male cable connector	532 603 006	532 604 006	532 606 006	530 760 006	532 608 006	532 612 006	532 617 006	532 625 006	532 635 006	530 700 006
Female coupler connector	°530 153 006	°530 154 006	°530 156 006	°530 753 006	°530 158 006	°530 162 006	530 170 006	530 175 006		
Type 3 cable clamp	630 135 006	630 135 006	630 135 006	630 138 006	630 138 006	630 138 006	630 155 006	630 155 006	630 175 006	630 175 006
Flat-Gasket for panel connector (pack of 10)	536 945 006	536 945 006	536 945 006	536 946 006	536 946 006	536 946 006	536 947 006	536 126 006	536 136 006	536 136 006
Housing for panel connector	536 935 006	536 935 006	536 935 006	536 937 006	536 937 006	536 937 006	536 996 006	536 880 006	536 881 006	536 881 006
Protective cap for panel connector	536 910 006	536 910 006	536 910 006	536 911 006	536 911 006	536 911 006	536 912 006	536 913 006	536 914 006	536 914 006
Protective cap for male cable connector	532 265 006	532 265 006	532 265 006	532 279 006	532 279 006	532 279 006	532 267 006	532 268 006	532 269 006	532 269 006
Protective cap for coupler connector	536 910 606	536 910 606	536 910 606							

- For the version with 4 contacts ∅ 4 mm, contact No. 4 of the panel connector and the coupler connector, which makes the electrical connection before the other 3 contacts and disconnects it after separation, can be used as a ground contact.
- ° The panel connectors are also compatible with the Waterproof cable connectors page 22 and Waterproof PG cable connectors page 26.
- ° Square female panel connectors and female coupler connectors are also of the „Rapid“ type, page 16 with 3 to 12 contacts.
- Sealable tamper-evident connectors for housings 1 and 2. See: Accessories.
- For assembly, wiring, panel connector installation and contact arrangement instructions, see: Technical guides.
- Other accessories, see: Accessories.
- \* The circular male panel connector with 3 to 12 contacts includes a body, a seal, a nut and its locknut.